



secuENTRY pro

Electronic Door Lock  
secuENTRY pro 7073 ENROLMENT

en Download: www.burg.biz  
fr Download: www.burg.biz  
nl Download: www.burg.biz  
it Download: www.burg.biz  
es Descarga: www.burg.biz  
pt Download: www.burg.biz

se Download: www.burg.biz  
no Download: www.burg.biz  
dk Download: www.burg.biz  
fi Ladattava tiedosto: www.burg.biz  
el λήψη: www.burg.biz  
tr İndir: www.burg.biz

ro Descărcare: www.burg.biz  
pl Pobieranie pliku: www.burg.biz  
cz Stáhnout: www.burg.biz  
hu Letölthető: www.burg.biz  
sl Download: www.burg.biz  
sk Download: www.burg.biz

hr Download: www.burg.biz  
ru загрузка: www.burg.biz  
bg Download (зареди): www.burg.biz  
et Download: www.burg.biz  
BW\_Enrolment\_BA\_sE\_014111  
SWI 060520



### Instructions for use

Dear customer,  
thank you for choosing the **secuENTRY pro 7073 ENROLMENT**.  
With the help of the **secuENTRY pro 7073 ENROLMENT** you can save finger scans and transponders in the secuENTRY software.

Via the provided USB cable a connection between the **secuENTRY pro 7073 ENROLMENT** unit and the computer is established, a software for installation is not needed. You can find additional information in the user's manual of the secuENTRY software.

The following image shows the reading areas of the ENROLMENT unit:



III.1: Reading areas

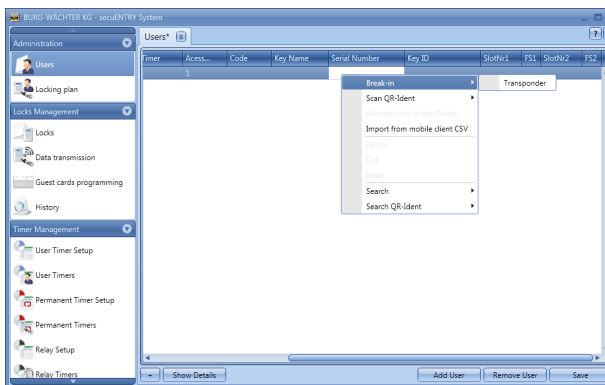
#### Reading of transponders

Lay the transponder onto the RFID reading area of the **secuENTRY pro 7073 ENROLMENT** unit.



III.2: Reading-placement of the transponder

Via the user administration of the secuENTRY software, transponders are being registered with a right click in the "Serial Number" field, under "Learning-In" → "Transponder".

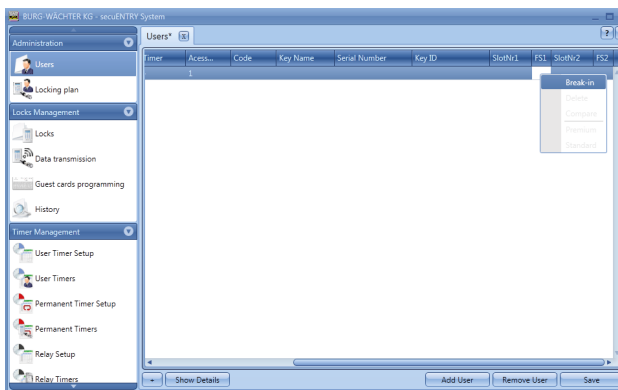


III.3: secuENTRY software

The serial number of the transponder is filled in automatically.

#### Reading of fingerprints

Via the user administration of the secuENTRY software, fingerprints are being read with a right click on the field "FS1" resp. "FS2" "Learning-In".



III.4: secuENTRY software

The software will guide you through the next steps. To register your fingerprint, you need to move your finger in direction of arrow over the sensor.



III.5: Direction of movement while reading the finger

#### Description of LED display

Placed in the upper range of the secuENTRY pro 7073 ENROLMENT unit there are two coloured LEDs.

- Green LED:** Readiness for a successful learning in.
- Green LED flashing:** Data transfer.
- Red LED:** Finger not accepted.

#### Warranty

To provide you with a qualitative impeccable and valuable product and to optimally help you in the case of service or repair, it is necessary that flawed or defective devices are handed back to your retailer together with the QR code/s and the original proof of purchase.

With returning according to your cancellation right, all components need to be in factory setting. In the case of a disregard, warranty expires.

#### Disposal of your device

Dear customer,

Please help us avoid unnecessary waste. Should you intend to dispose of this device at any time, please remember that many components of this device contain valuable materials that can be recycled.



Please be aware that electrical and electronic equipment and batteries marked in this way must not be disposed of with household waste but collected separately. Please obtain information on the collecting points for electrical waste from the responsible authority of your city/municipality.



BURG-WÄCHTER KG hereby declares that this device complies with the Directives 2014/53/EU (RED), 2014/30/EU (EMC) and 2011/65/EU (RoHS).

The complete text of the EU Declaration of Conformity is available at the following Internet address: [www.burg.biz](http://www.burg.biz)

Printing and typographical errors as well as technical alterations reserved.